

Technical Specifications

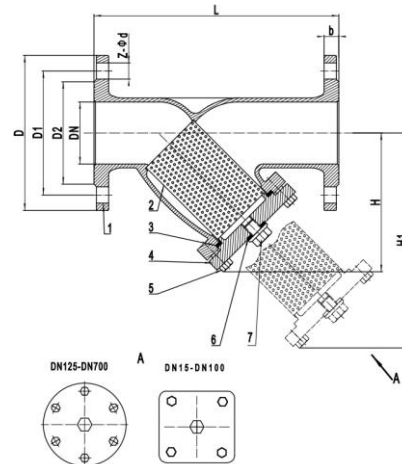
Specification	Description
Nominal Pressure	16bar
Shell Test Pressure	24bar
Working Temperature	T ≤ 200 °C
Working Medium	Water
Design Conforms to	DIN 3202-F1
Flange Standard	EN 1092-2 PN16



Materials

No.	Part	Material
1	Body	Cast Iron
2	Screen*	SS304
3	Gasket	Stainless Steel Graphite Spiral-Wound
4	Cover	Cast Iron
5	Screw	Stainless Steel
6	Gasket	Stainless Steel Graphite Spiral-Wound
7	Drain Plug	Stainless Steel

*DN50-150: 1.5mm dia. hole, 40% free area
DN200-400: 3.0mm dia. hole, 40% free area



Dimensions (mm)

DN	L	D	D1	D2	b	Z-ød	H	H1
50	230	165	125	102	18	4-18	124	199
65	290	185	145	122	18	4-18	147	237
80	310	200	160	138	22	8-18	161	260
100	350	220	180	158	22	8-18	193	321
125	400	250	210	188	26	8-18	257	410
150	480	285	240	212	26	8-23	291	466
200	600	340	295	268	30	12-23	357	570
250	730	405	355	320	32	12-23	443	666
300	850	460	410	378	32	12-27	455	786
350	980	520	470	438	30.5	16-27	565	915
400	1100	580	525	490	32	16-30	635	1041