

M410 BRONZE CHECK VALVE

MATE

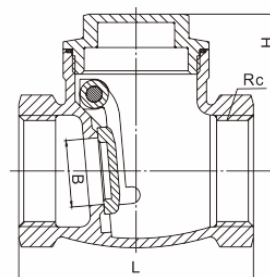
Technical Specifications

Specification	Description
Nominal Pressure	20bar
Working Medium	Water, Non-Corrosive Liquid
Working Temperature	-20°C ≤ T ≤ 180°C
Thread Standard	BS EN 10226-1 (ISO 7)



Materials

No.	Part	Material
1	Body	Bronze
2	Stem	Bronze
3	Mandrel	Stainless Steel
4	Bonnet	Bronze
5	Gasket	PTFE
6	Bolt	SS301



Dimensions (mm)

DN	L	B	H
15	50	13	35
20	58	19	40
25	70	25	47
32	82	32	54
40	90	36	60
50	110	46	69
65	116	57	78
80	140	72	88
100	166	90	115